



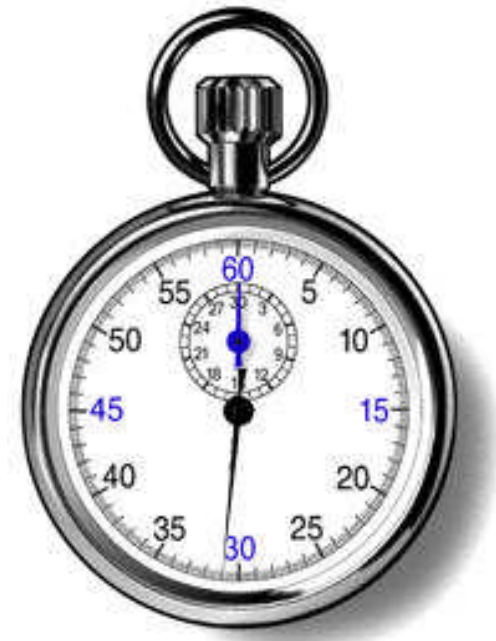


Criteria-based Comparison

Criteria. See how <i>Paperwork Solutions/FileMaker Pro</i> database technology compares to <i>STI</i> , word processors, and manual paperwork in fifteen (15) categories:	Paperwork Solutions/ FileMaker Pro	Software Technology Inc. (STI)	Word Processors (Microsoft Word)	Manual paperwork
• Provides an easy-to-use graphical interface using simple "point-n-click" menu commands.	Yes	No (navigation features are awkward)	Yes	No (n/a)
• Offers networking and/or Internet transfer/web hosting capabilities for solutions and/or files.	Yes	Yes	Yes	No (n/a)
• Enhances professionalism by producing neat-looking computer-generated documents.	Yes	Yes (however, layout designs are limited)	Yes	No (n/a)
• Allows users simple, 100% customization capabilities, including creating automated tasks (scripts), calculations, and hyperlinks.	Yes	No	Yes (however, does not have easy script-making capabilities)	No (n/a)
• Uses drop-down menus, check boxes, and radio buttons for speedy data entry, rendering typing and "cutting and pasting" null and void in almost all instances.	Yes	No	No	No (n/a)
• Completes most discipline reports, lesson plans, and other classroom documentation tasks and duties in less than one (1) minute .	Yes	No	No	No
• Incorporates a "find" feature to list and sort all data within field entries (lesson plan standards, names, etc.), to efficiently manage information.	Yes	No	Yes (but does not offer specific field entry search or sorting capabilities)	No (n/a)
• Operates cross-platform (programs can be shared across <i>Windows</i> and <i>Mac</i> operating systems).	Yes	No (may only be used in <i>Windows OS</i>)	No (may only be used in <i>Windows OS</i>)	No (n/a)
• Offers proactive strategies to reduce classroom discipline problems by conveying the seriousness of the offense to students, their parents, and school administrators. Also, forms provide consequences and a reminder check box for teachers to check for parent signatures.	Yes	No (fails to ensure communication to students and their parents/guardians and does not convey the seriousness of offense nor provide consequences)	Yes (providing the criteria is included in the document's design)	Yes (however, handwriting takes longer, necessitates greater management skills, and may not convey seriousness)
• Aligns digital pictures and scanned images automatically in "container fields" for student awards.	Yes	No	No	No (n/a)
• Adapts solutions to hand-held devices (Example: PDAs, and supports both <i>Palm</i> and <i>Windows Mobile</i>).	Yes (must include <i>FileMaker Mobile</i> software)	No	Yes	No (n/a)
• Creates, saves, and secures documents as PDF.	Yes	No	No	No (n/a)
• Documents school district code of conduct violations for discipline (with page references) and complete state standards for lesson plans with a click of the mouse.	Yes	No	No	No (n/a)
• Lists all previously entered data in field entries alphanumerically (Ctrl + I) for future selection.	Yes	No	No	No (n/a)
• Saves and organizes documents automatically in a user-friendly "electronic card file" format.	Yes	No	No	No (n/a)
Final Results	 Go!	 Stop!	 Stop!	 Stop!



Look: Complete most lesson plans, discipline reports, & many other documentation tasks in **less than one (1) MINUTE!**

“Using grading and attendance software (*STI*) or word processors as a documentation tool is like using a screwdriver or a wrench as a hammer. For paperwork tasks that require inputting information, or data, use the *right* tool – personal desktop database software.” – Derek Hyder, Educator & Founder of *Paperwork Solutions*

Who's Your Dăta?

Paperwork
Solutions



www.PaperworkSolutions.com